

# Three Dog Night Hat

By Cindy Walker



**\*Sizes:** Adult (20-22" around, 8.5" deep),

**Yarn:** total hat uses 2 oz or 240 yards of fingering weight yarn. We used our yarn :) -

Color A—solid darker color, 1 oz/120 yards fingering

Color B—\*long run color way, 1 oz/120 yards fingering

Hat pictured used Hot Black and Harris Long Run

**Needles:** size 1 and 2 -16 inch circular, Size 2 double pointed needles.

**Gauge:** 8 stitches to the inch

**Definitions:** **k**-knit, **p**-purl, **Inc1**-knit into the front and back of the stitch, **k2tog**-knit 2 stitches together at one time, **S2KP** (sl 2 k1, p2sso).-**This is a basic double decrease**-slip two *as if to knit two together*—knit the next stitch, then pass two slip stitches over the knit stitch.

**Know How:** advanced beginner, determined, stranded knitting techniques are used in this project.

Copyright 2024 Cynthia Walker—All rights reserved

[www.stonyhillfiberarts.com](http://www.stonyhillfiberarts.com)

828 817-3096

\$6.00

With A, Cast On 144 stitches.

Place marker at the beginning of the round.

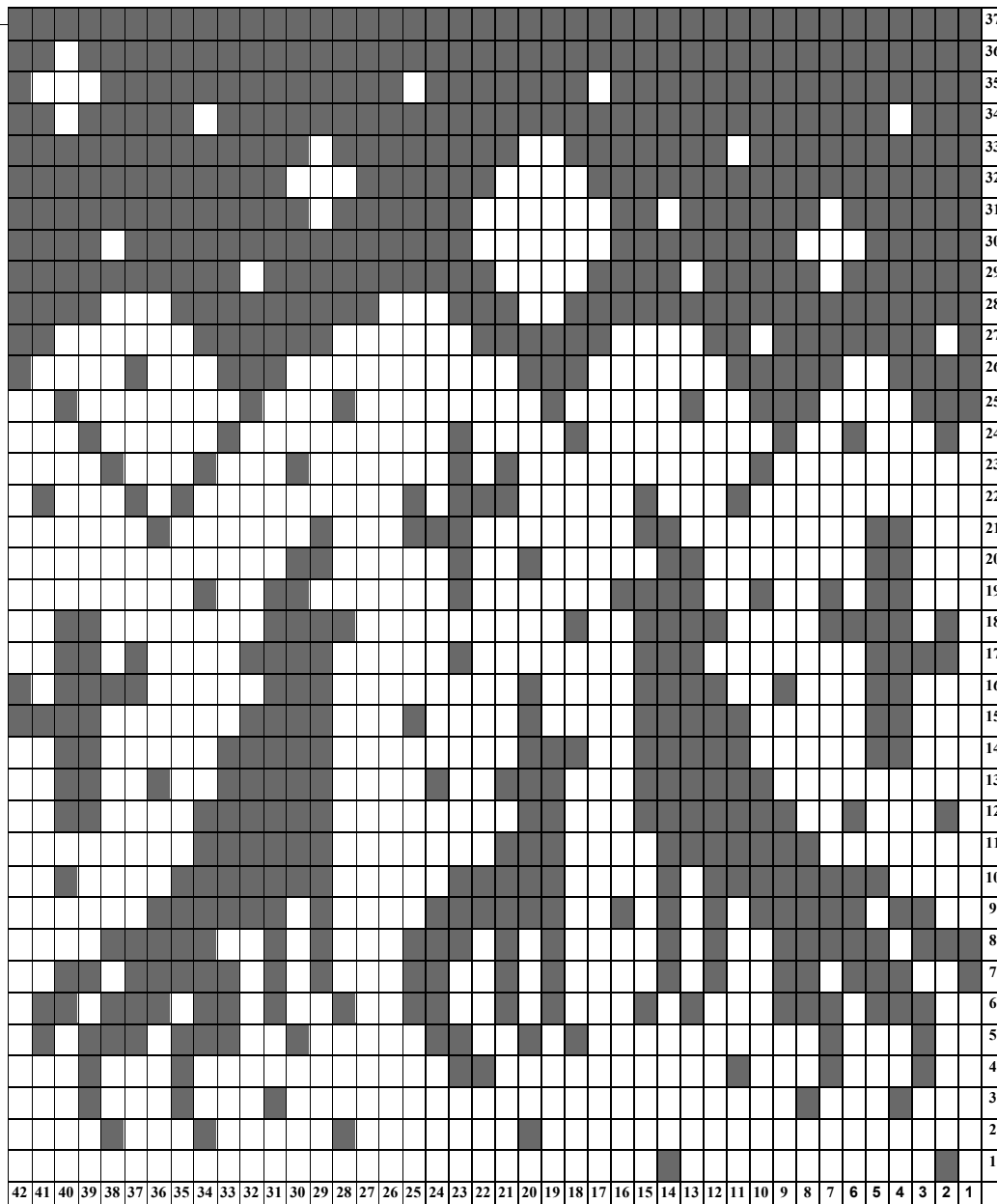
Color A—solid color  Color B—long run 

Rib: With Color A k1, p1 for 1.5 inches then with Color B for 1.5 inches. (3 inch total)

**Increase Round:** With B, \*Knit 5, incl, \*repeat around (168 stitches)

Round 1.—36. Follow chart. Leave the first marker then place markers every 42 st.

Round 37. Knit as charted in color A, leaving the first marker, remove the other markers then place markers every 28 stitches.



### Crown Decreases:

- \*k14, S2KP, knit to marker; \*repeat around.
- Knit around (156 stitches).
- \*k13, S2KP, knit to marker; \*repeat around.
- Knit around (144 stitches).
- \*k12, S2KP, knit to marker; \*repeat around.
- Knit around (132 stitches).

Continue in this manner until you have 12 stitches, \*k2tog, \*repeat around. Cut yarn with a 4 inch tail and pull through the remaining 6 stitches. Sew in loose ends.

### S2KP Double Decrease

Slip two *as if to knit two together*—knit the next stitch, then pass two slip stitches over the knit stitch.